

Multiple Clamps



MCP-34A

Multiple Clamp MCP-34 + Hi-Hat
Cymbal Knurled Rod 4/8" (12.7mm)



MCP-34

Multiple Clamp
For Cymbal Knurled Rod 4/8" (12.7mm)



MCP-35

Multiple Clamp for Cymbal



MCP-36

Multiple Clamp



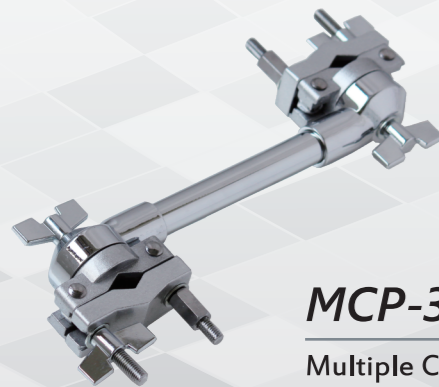
MCP-37

Multiple Clamp for Cowbell
(Cowbell not included)



MCP-38

Multiple Clamp for Cowbell
9.8mm – 12.7mm (Cowbell not included)



MCP-39

Multiple Clamp, Free Size,
Max.: 1.1"



MCP-40

Multiple Clamp



DJMS-001

Deluxe Fully Adjustable Djembe Stand
(Djembe not included)
Tube: 1 1/8"
Brace: 4x16x455mm



CBHC-001

Chromed Chime Bar Holding Clamp
(chime bar not included)



CORA & PETER KUO, INC.



MAILING ADDRESS: P.O. BOX 610 TAICHUNG, TAIWAN, R.O.C.
ADDRESS: ROOM C, 7TH FLOOR, NO. 270, CHUNG-MING SOUTH
ROAD, WEST DISTRICT 40347, TAICHUNG, TAIWAN, R.O.C.



TEL : 886-4-23720100 23720540 23720365 23761819
FAX : 886-4-23752221 23720463



EMAIL : cpkinc@ms12.hinet.net



http : //www.cpkinc.com



Cymbal Stand



CBS-369

Cymbal Stand
Tube: 5/8"+3/4"+7/8"
Brace: 4x19x310mm



CBBS-369

Cymbal Boom Stand
Tube: 7/8"+3/4"
Brace: 4x19x310mm



CBS-370

Gearless Cymbal Stand
Tube: 5/8"+3/4"+7/8"
Brace: 4x19x310mm



CBBS-370

Gearless Cymbal Boom Stand
Tube: 5/8"+3/4"+7/8"
Brace: 4x19x310mm



CBBS-371

Gearless Cymbal Boom Stand
Tube: 7/8"+1"+1.1"
Brace: 4x16x450mm



SST-424Y

Omni-Ball
Joint Adjustment System Snare Stand
Tube: 1"+1.1"
Brace: 4x16x250mm

Deluxe Saddle Seat Drum Throne



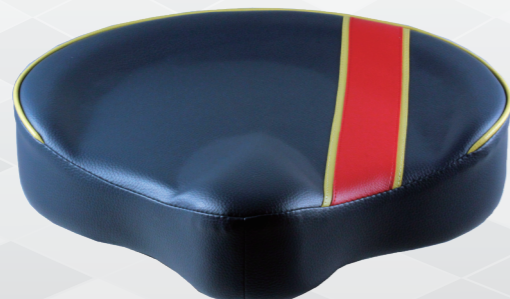
TR-798
 Tube: 1.1" x 242mm
 Brace: 4x16x355mm



TR-800



TR-799

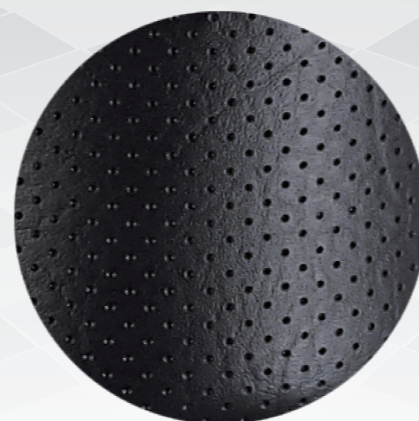


TR-798



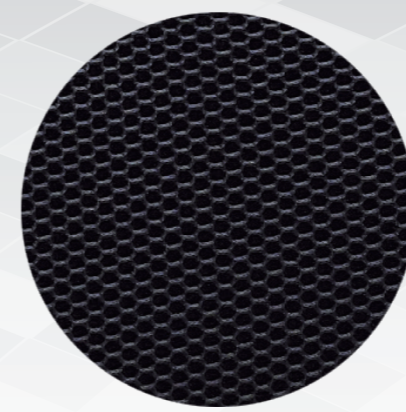
TR-801

Artificial Leather Seat
 Tube: 1.2"
 Brace: 4x16x375mm



TR-802

Semi-Permeable
 Artificial Leather Seat
 Tube: 1.2"
 Brace: 4x16x375mm



TR-803

Cellular
 Artificial Leather Seat
 Tube: 1.2"
 Brace: 4x16x375mm

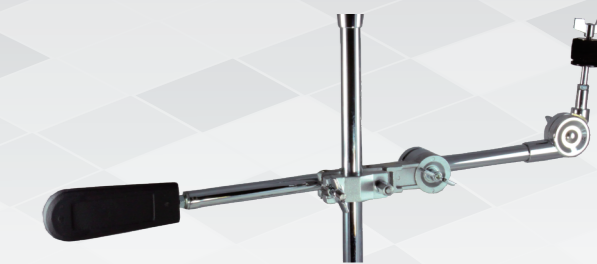
Deluxe Saddle-Seat Drum Throne with Back-Rest

Cymbal Stacking Attachment & Boom Arms



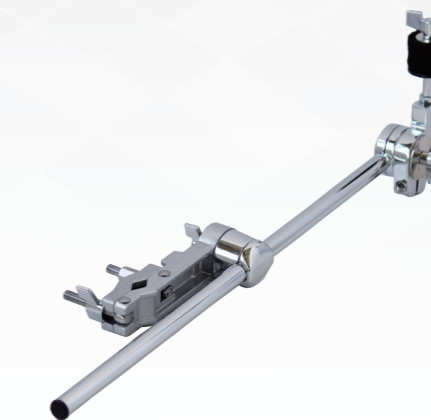
BM-344

Gearless Cymbal Boom Arm
 with 4/8" (12.7mm) Rod on Multiple clamp



BM-346

Cymbal Boom Arm With Weight Balance
 3/4"x430mm on multiple clamp



BM-345

Gearless Cymbal Boom Arm
 5/8"x500mm on Multiple Clamp



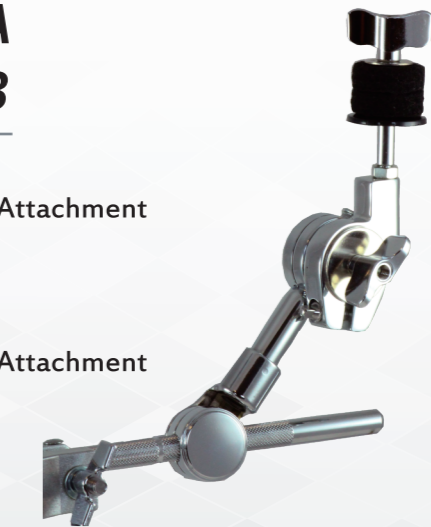
BM-347

Cymbal Boom Arm
 4/8"(12.7mm) Knurled Rod on Multiple clamp

CSA -76A
CSA -76B

CSA-76A
 Cymbal Stacking Attachment
 5/8" x 100mm

CSA-76B
 Cymbal Stacking Attachment
 5/8" x 300mm



CSA -75

Cymbal Stacking Attachment
 3/4" x 220mm

CSA -78/6
CSA -78/8

Cymbal Stacking Attachment
 CSA-78/6 6mm thread
 CSA-78/8 8mm thread



CSA -77

Cymbal Stacking Attachment
 With Clamp 3/4" x 160mm